

# Climate change aid to Indonesia



A case study of the  
Kalimantan Forests and Climate  
Partnership

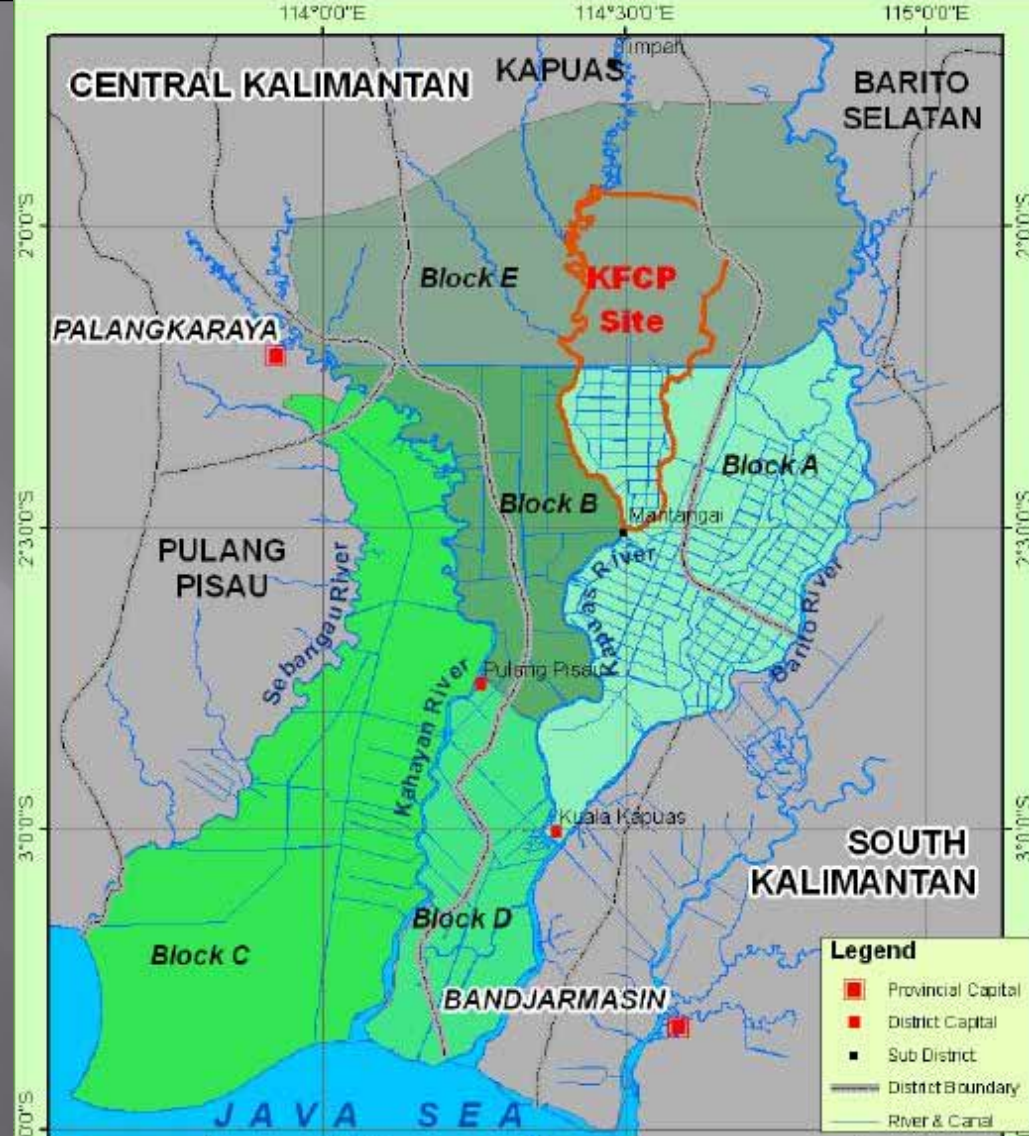
# Peat domes - rich storehouses of below-ground carbon



# Borneo



# Mega Rice Project and KFCP Project location



# International Forest Carbon Initiative: \$273 m

## **Indonesia–Australia Forest Carbon Partnership (IAFCP) \$70 m**

- Bilateral package of support: INCAS, FRIS \$ 10 m
- Kalimantan Forests and Climate Partnership \$ 30 m
- Sumatra Forest Carbon Partnership \$ 30 m

## **Roadmap for Access to International Carbon Markets**

## **Research partnership on REDD (CIFOR)**

## **World Bank Forest Carbon Partnership Facility**

## **PNG–Australia Forest Carbon Partnership**

**Other initiatives:** World Bank Forest Investment Program, Partnership with the Clinton Climate Initiative on carbon monitoring, Asia Pacific Forestry Skills and Capacity Building Program, Development of concept models for demonstration activities

# KFCP project fact sheet

Budget	\$30 million (now c. \$40m)
Date announced	9 Sept 2007
Project area	120,000 hectares in Kapuas district (area to be rehabilitated = 3,000 hectares)

## Time-frame

Jan – June 2009	Early implementation phase
July 09 – June 2012	Full implementation phase

# Target outcomes / results

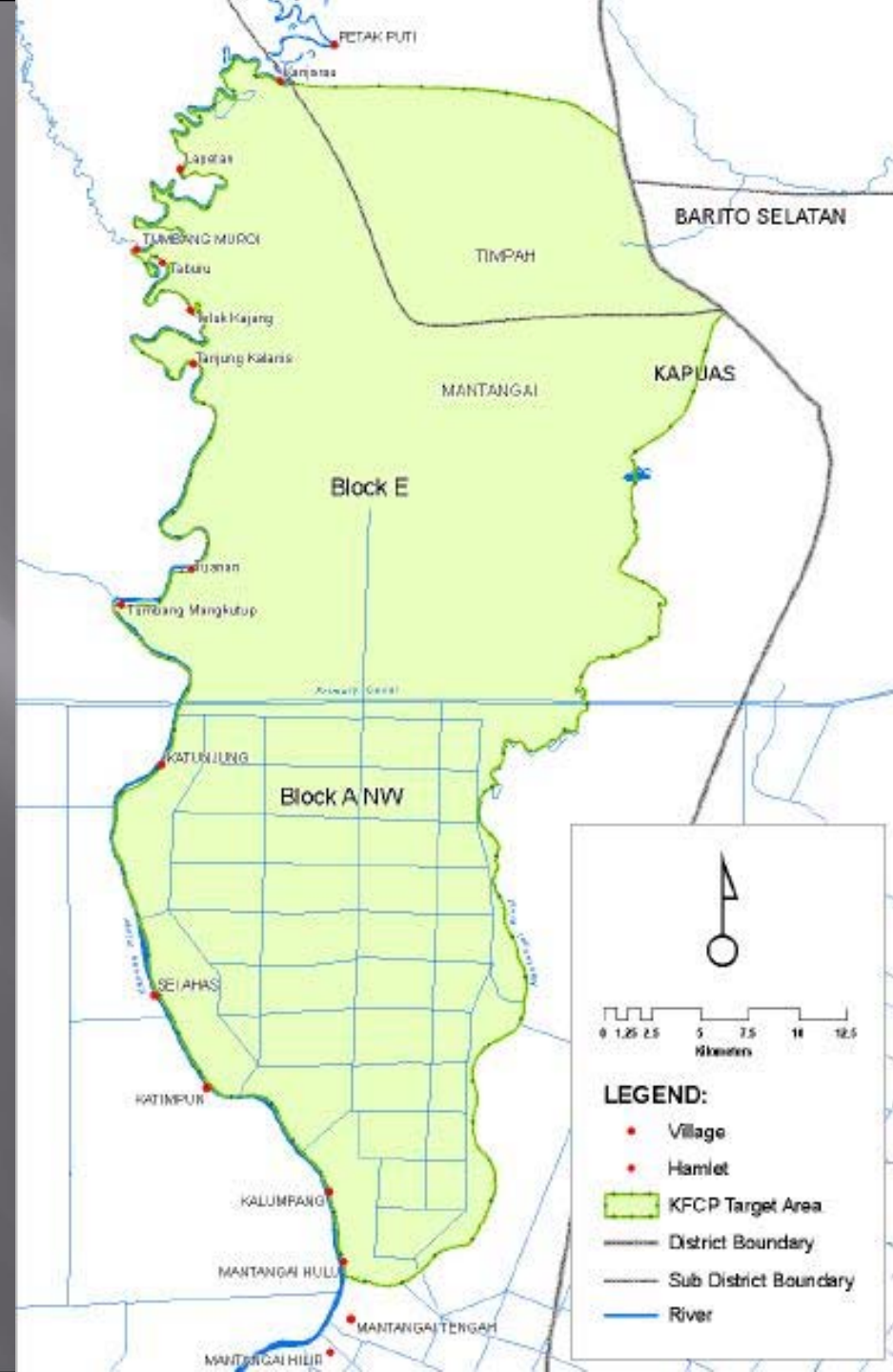
## Greenhouse emissions from deforestation and degradation of peat swamp forest reduced through:

- ▣ Canal-blocking
- ▣ Reforestation
- ▣ Fire prevention
- ▣ Community engagement, improved livelihoods

## Preparing for REDD:

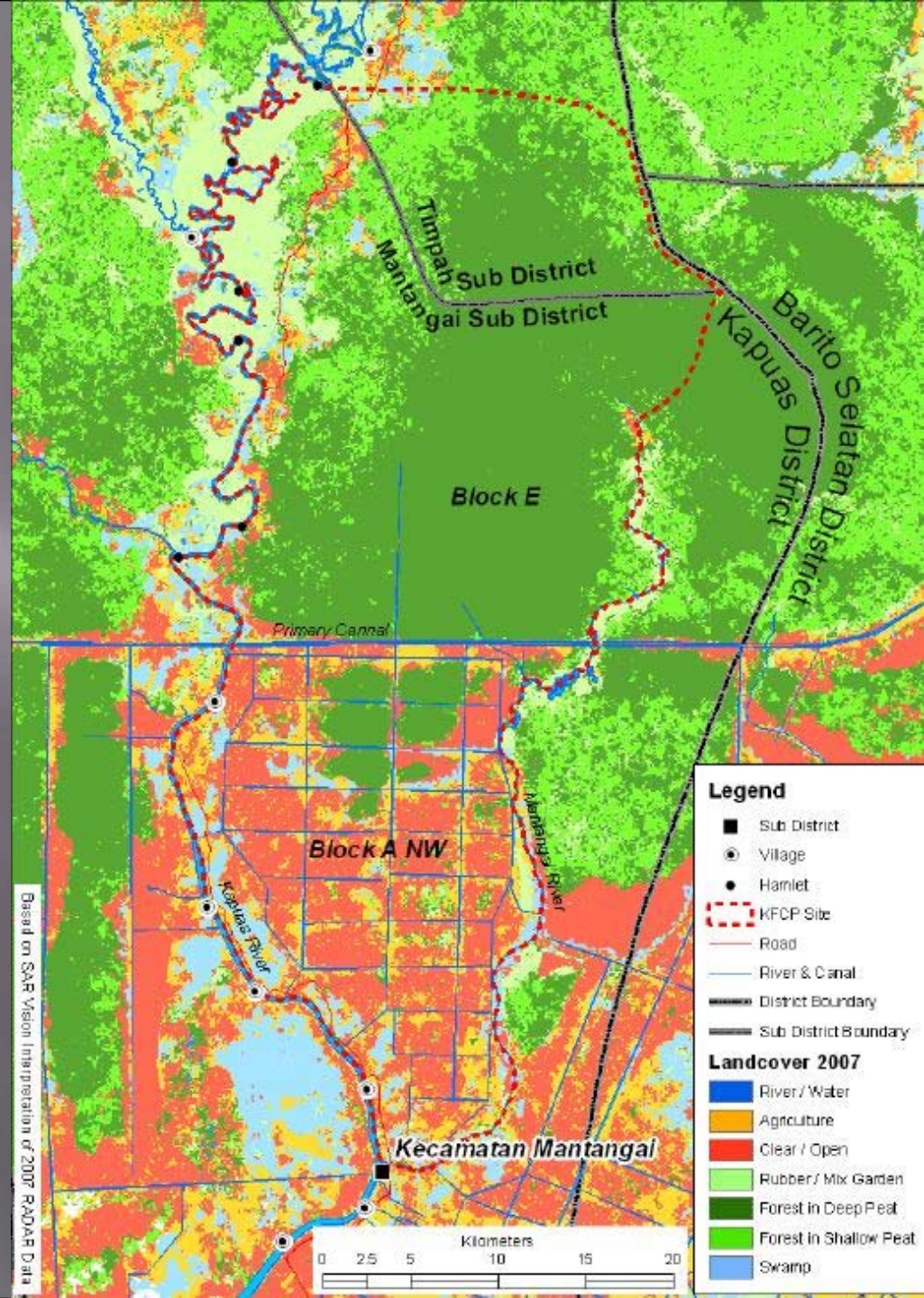
- ▣ GHG emissions estimation and monitoring program established.
- ▣ Practical and effective REDD payment mechanisms demonstrated.
- ▣ REDD capacity developed at local levels.

# KFCP project area





# Land cover in the KFCP area 2007



# Research questions

1. What success have past peatland rehabilitation projects in the area had?
2. What development pressures exist in the broader Ex-Mega Rice Project area?
3. What progress has been made by the KFCP project so far?
4. What impact is the project likely to have?
5. What are the lessons for future interventions in peatland emission mitigation?

# Findings: Experience of past projects



# Findings: Past efforts to block canals



# Perspectives from the community



Pak Ombieipe, Dayak community leader, Mantangai Hulu

# Development pressure in the region

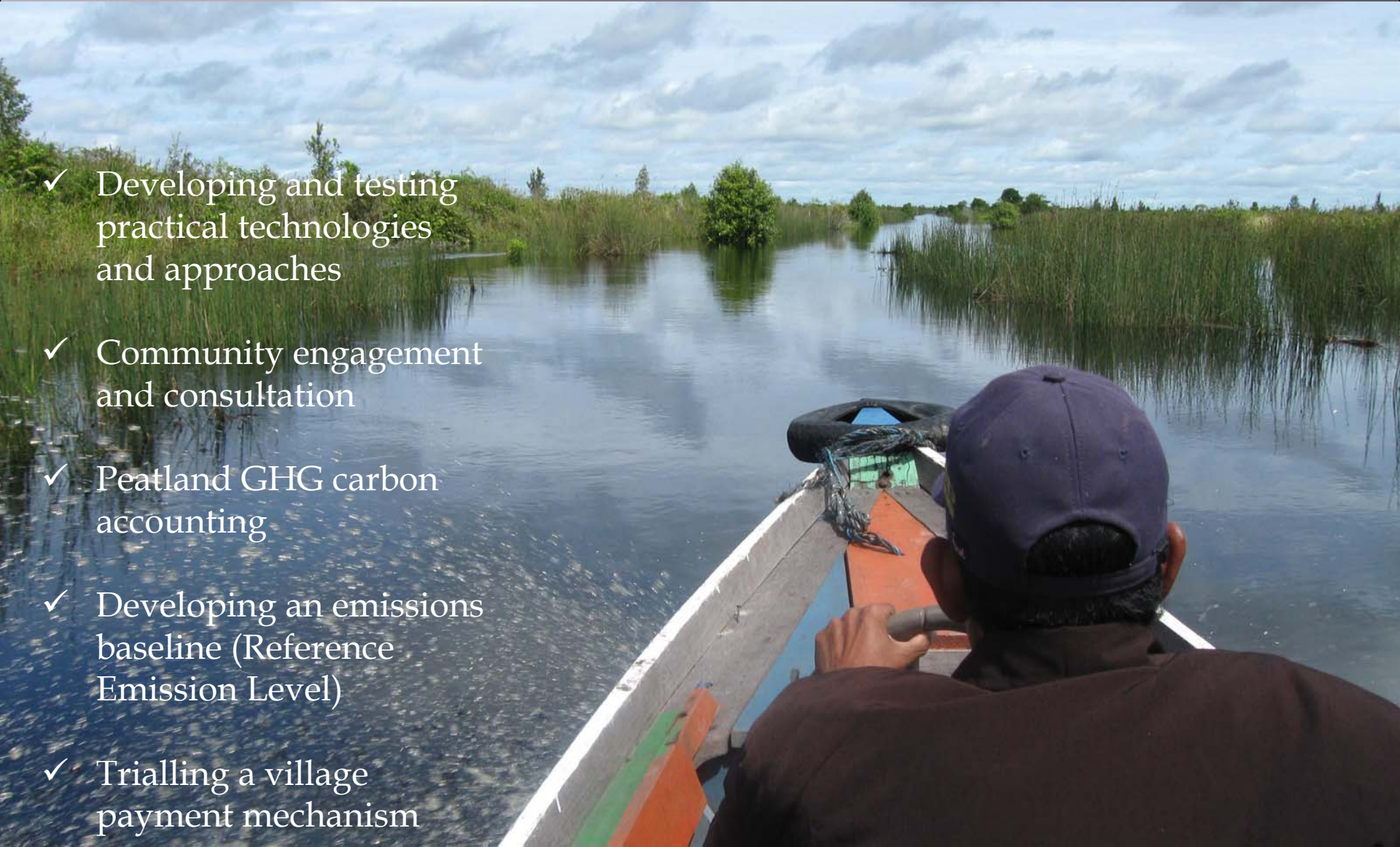


# KFCP progress so far



# KFCP progress so far

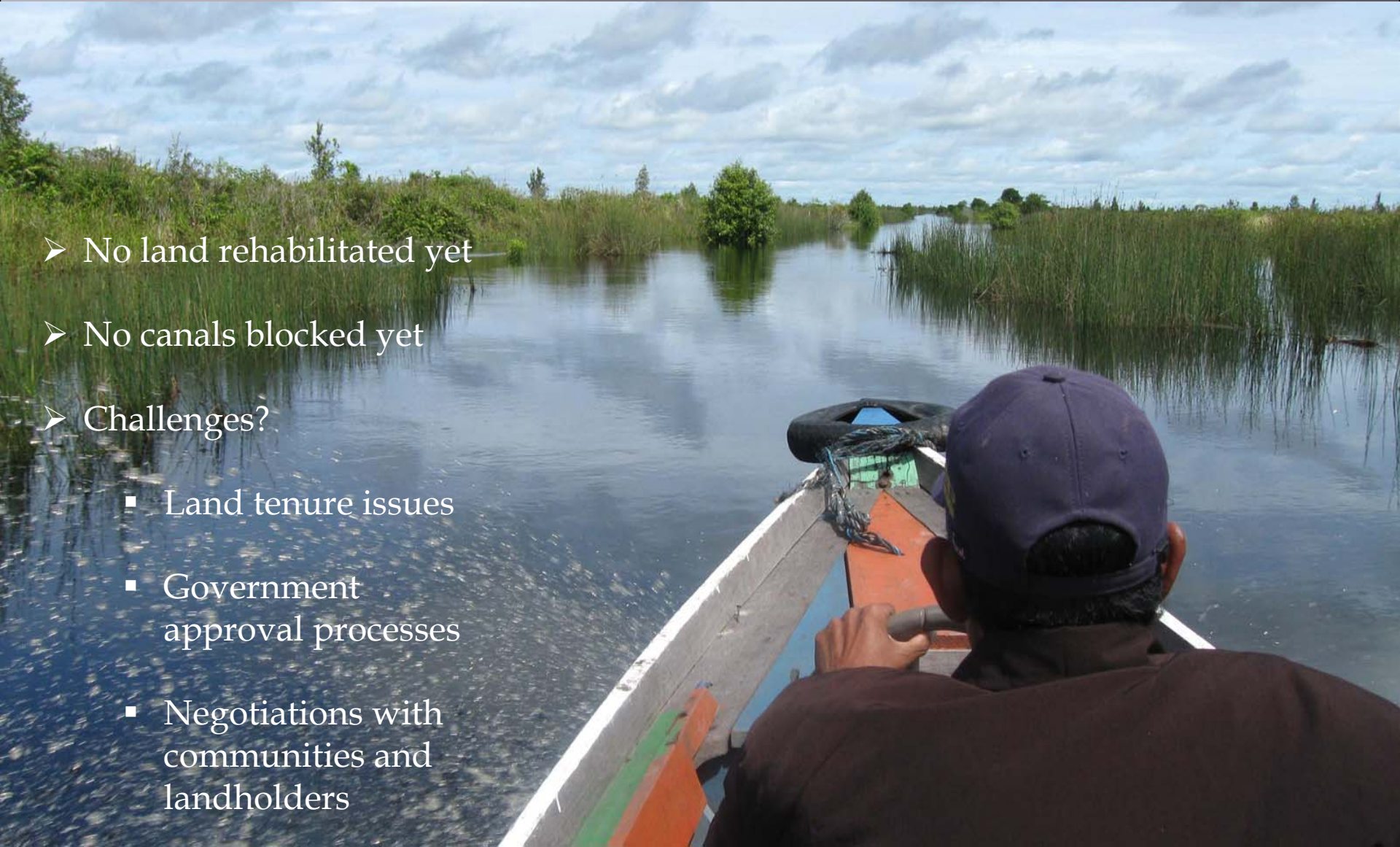
- ✓ Developing and testing practical technologies and approaches
- ✓ Community engagement and consultation
- ✓ Peatland GHG carbon accounting
- ✓ Developing an emissions baseline (Reference Emission Level)
- ✓ Trialling a village payment mechanism





# KFCP progress so far

- No land rehabilitated yet
- No canals blocked yet
- Challenges?
  - Land tenure issues
  - Government approval processes
  - Negotiations with communities and landholders



# Conclusions ...



What impact is the project likely to have?



# What are the lessons for future interventions in peatland emission mitigation?



Thank you!

